

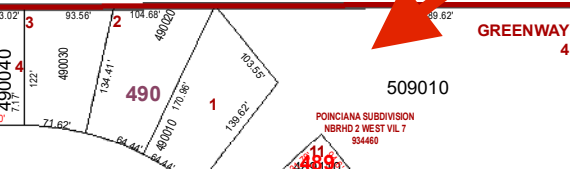
1.26 Acre Lot Location

Community of Homes NE of Lot Area

20 Acre Lot sold in 2021 for \$295,000

20 Acre Lot sold in 2023 for \$115,000

New Construction Activity SW of Lot Area

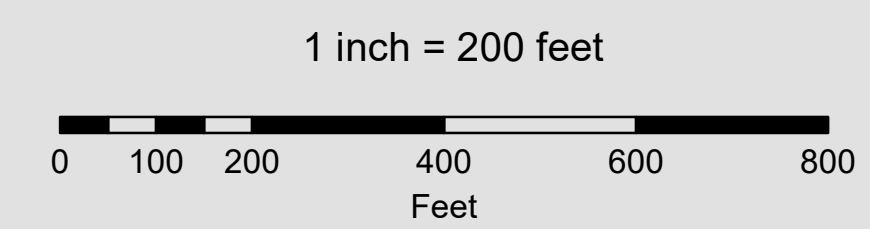
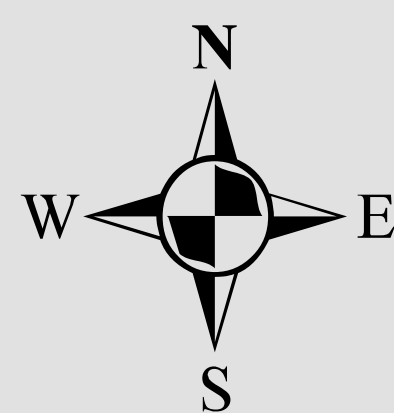


Location Map
Polk County, Florida

All of Section 27 Twp. 27 Rge. 28
Acres: 644 +/-

Legend

- Parcels
- Sections
- Easements
- Lots
- Quarter Section Lines
- RR Lines
- Subdivisions
- Meander Lines
- Municipal Boundaries
- Gov't Lots
- Water Lines
- Water Bodies



Note: This map is a worksheet used for illustrative purposes only. This is not a survey.

Date Printed: 11/25/2023



Prepared by the Office of
Marsha M. Faux, CFA, ASA
Property Appraiser
Polk County, Florida
255 North Wilson Avenue - Bartow, Florida - 33830-3951
(863) 534-4777